



COVID-19 MARKET GUIDE

TAMBORINE MOUNTAIN COUNTRY MARKETS

This guide has been prepared to help us work together to provide a safe environment for patrons, vendors and volunteers.

The Tamborine Mountain Country Markets will be returning to Tamborine Mountain on 13th September, 2020.

Whilst alterations may be required to accommodate the health conditions in September, by working together we will have a great Market.

Let's make it a great day!

Government requirements

(and how we are implementing them)

Social Distancing

- **Each stall will be responsible for their own markings, and for implementing appropriate stall layouts (examples attached).**
- **Using these layouts, all stall holders will be at least 1.5 m apart.**
- **Each stall will have hand sanitizer available.**
- **Designated entry and exit points.**
- **Some of our stall space have been deleted so we can widen the aisles.**
- **Food stalls to adhere to latest Health Department directive.**

Hand washing and sanitizing

- **Hand sanitizer will be available at all entrances and exits and near each toilet block.**
- **Toilets will be cleaned and sanitized frequently.**
- **Sanitizer and napkins will be available to clean your table before you sit down.**

Signage

- **COVID-19 signage will be appropriately placed.**

Staffing and Contact

- **Members of the Market Committee will complete the COVID-19 Infection Control Online Training. We encourage Stallholders to undertake training. The link can be found on our Website.**
- **Pre-registration of stallholders to ensure current contact information.**

Sunday, September 13th

7:30 am to 1:30 pm



**WHAT WE
NEED
FROM YOU**



- WE ARE ALL IN THIS TOGETHER – BE KIND,
- BE PATIENT, BE CONSIDERATE.
- ADHERE TO SOCIAL DISTANCING REQUIREMENTS.
- WASH YOUR HANDS! OFTEN!
- ONLY TOUCH WHAT YOU WANT TO BUY.
- TAKE NOTE OF ALL SIGNAGE.
- KEEP MOVING.
- USE THE COVIDSafe APP IF YOU HAVE IT.
- STAY HOME IF YOU ARE NOT WELL.

Let's make it a great day!

- DESIGNATED ENTRY AND EXIT POINTS.
- REDUCED NUMBER OF STALLS, ENABLING WIDER AISLES.
- SANITIZER STATIONS THROUGHOUT THE MARKET.
- SANITIZER AVAILABLE ON TABLES.
- EXTRA CLEANING AND DISINFECTING OF TOILETS.
- EXTRA VOLUNTEERS.
- ONE ENTRY POINT FOR STALLHOLDERS.
- PRE-REGISTRATION OF STALLHOLDERS.

**EXTRA
MEASURES
FROM US**

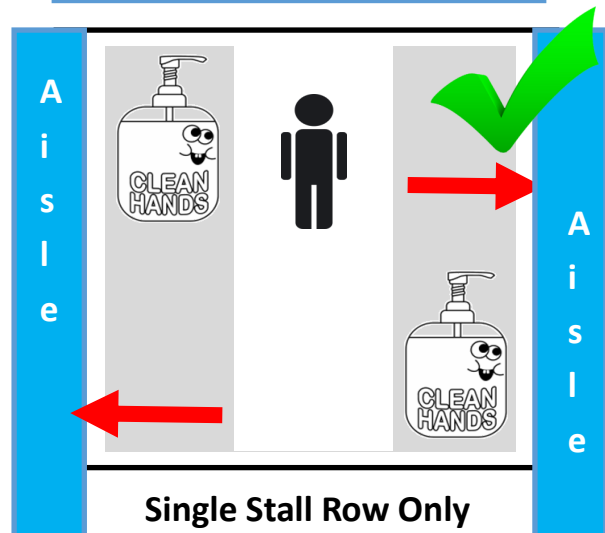
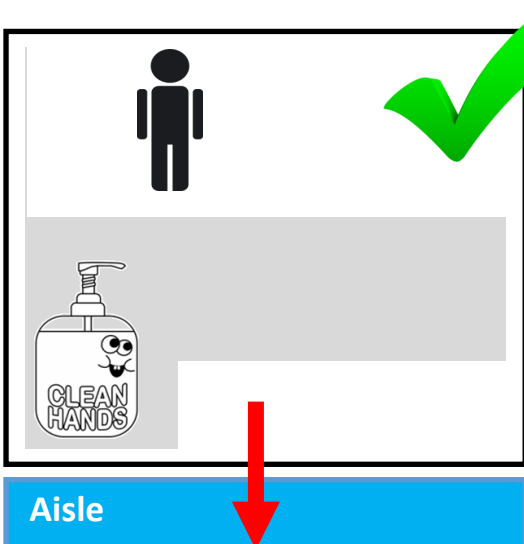
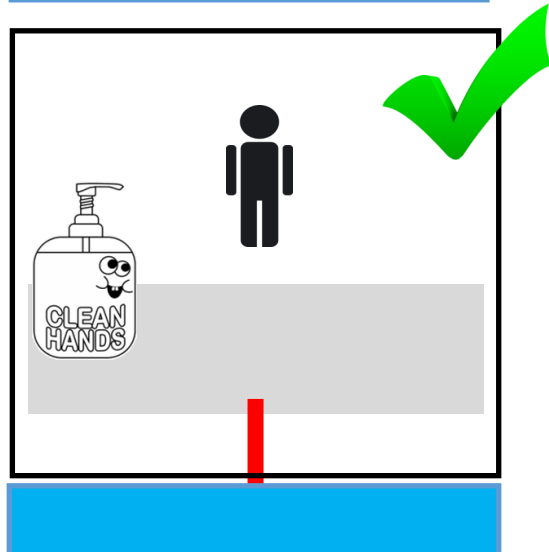
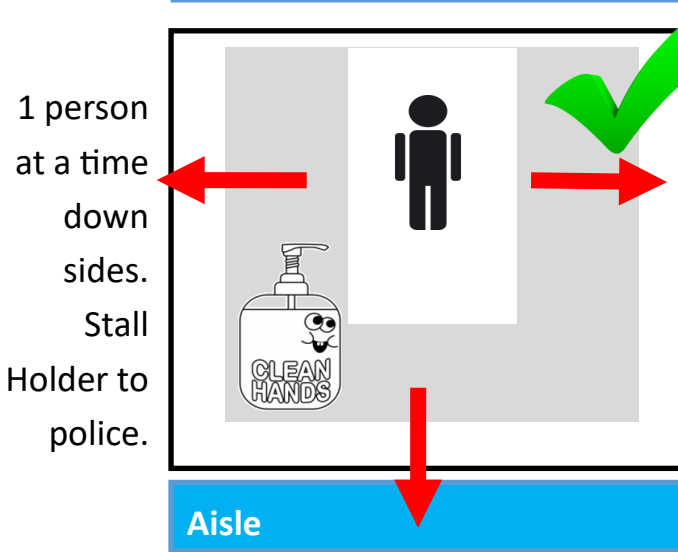
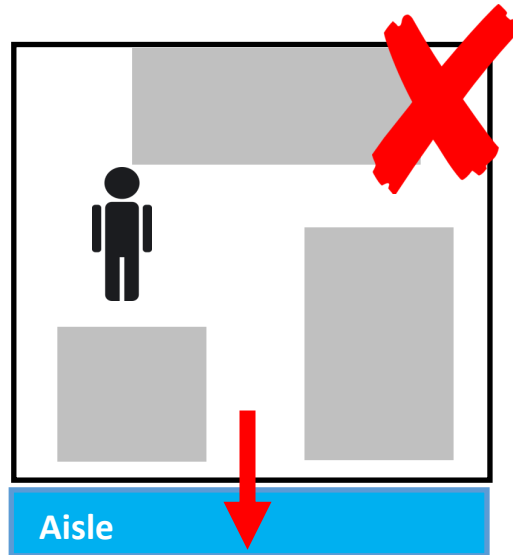
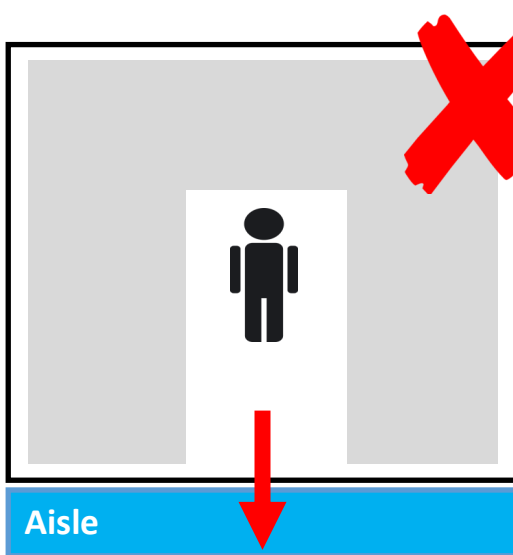


Stall Setup — Tamborine Mountain Country Markets



Please keep yourself separated from your customers.
 Our stall spaces are 3 m x 3 m. Please set up your stall inside this area, using one of the configurations below.

Please ensure that you have a bottle of hand sanitizer available for your customers.





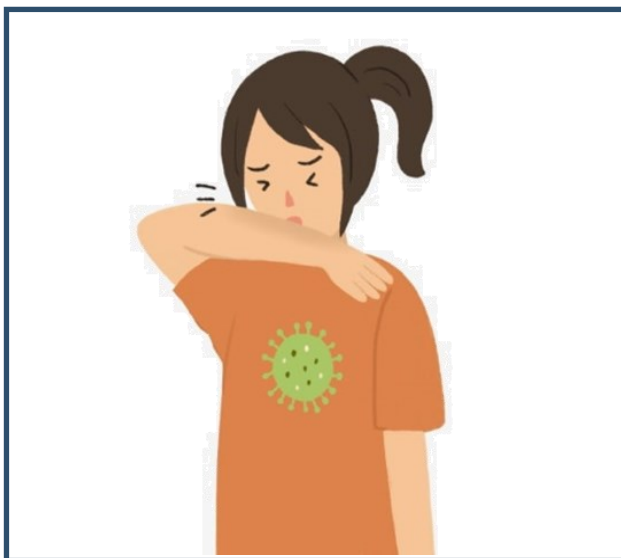
PLEASE ADHERE TO THE FOLLOWING GUIDELINES DURING YOUR VISIT TODAY.



SOCIAL DISTANCING



SANITISE YOUR HANDS



COVER YOUR COUGH



TURN ON THE APP

Let's make it a great day!